



CHARMING VILLAGE HOUSE IN THE BAIX EMPORDA

Baix Empordà / Parlavà

Ref: **PAR101**

Price	525,000 €
Surface	430 m ²
Rooms	5
Bathrooms	3
E. certificate	In progress

- ✓ Heating
- ✓ Storage
- ✓ Balcony

- ✓ Mountain views
- ✓ Fireplace

Stone village house dating from 1700 with 400 m2 distributed on three levels, in one of the most charming villages of the Baix Empordà. In 2020 serealizó a restoration where the original essence of the property was respected.

Distribution of the three floors:

First floor: vaulted entrance/reception hall with armored glass door that provides plenty of natural light to the room. Multipurpose room, in which at the back is the access door to the engine room. Also on this floor we find the cellar and laundry area that has direct access to the street.

First level: Four bedrooms (two suites with two bathrooms and one of them with a very sunny private terrace), 1 bathroom for the other two bedrooms.

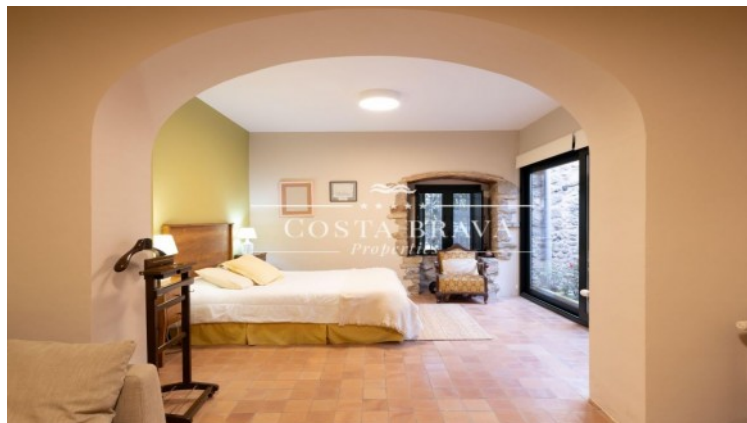
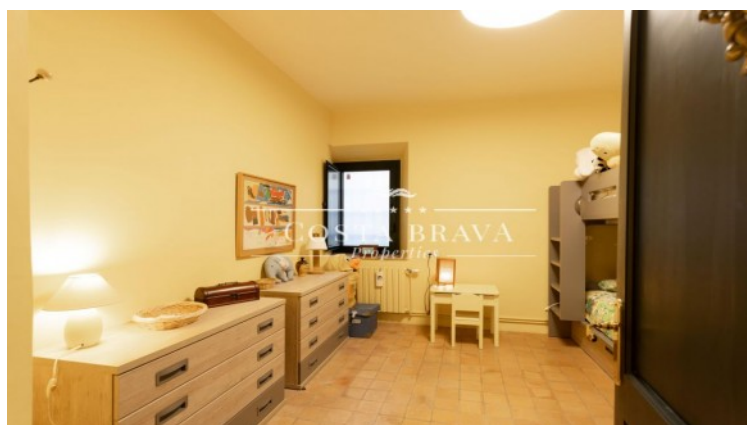
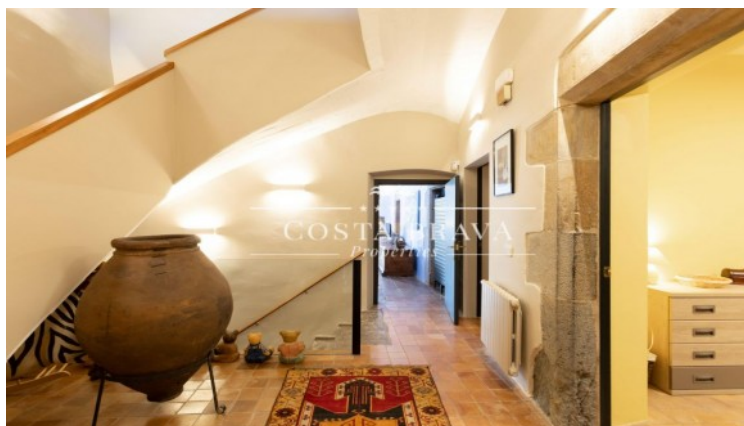
Second floor: On the left hand side large multipurpose room, currently enabled as a leisure and games room with access to terrace in gallery with arches on the facade, large L-shaped living room with access to terrace overlooking the old town, large and equipped kitchen and toilet.

It has parking that is currently not in use, but can be easily enabled again.









Contact us for more information or to arrange a viewing

Tel: +34 636 979 378 / info@propertiescostabrava.com
+34 625 380 718

<https://www.propertiescostabrava.com>