



## LARGE 18TH CENTURY FARMHOUSE, - LA BISBAL D'EMPORDÀ

Baix Empordà / Forallac

Ref: **BEI102**

Price	2,500,000 €
Surface	1735 m <sup>2</sup>
Rooms	9
Bathrooms	9
Plot surface	35,000 m <sup>2</sup>
E. certificate	In progress
Parking	6 spaces

- ✓ Pool
- ✓ Views
- ✓ Storage
- ✓ Phone
- ✓ Security
- ✓ Padel court
- ✓ Terrace
- ✓ Heating
- ✓ Backyard
- ✓ Furnished
- ✓ Fireplace
- ✓ Gym
- ✓ Parking
- ✓ Concierge

Large 18th century farmhouse, in the centre of Baix Empordà, near La Bisbal d'Empordà, with a plot of 35.159m<sup>2</sup>, and a constructed area of 1.735m<sup>2</sup>, which is mainly divided into 5 buildings:

La Masia, main house - 499m<sup>2</sup> built - 499m<sup>2</sup> built  
Guest house, annex house - 234m<sup>2</sup> constructed area  
Masoveros house - 142m<sup>2</sup> built  
Sports area (tennis, fronton and squash) - 740m<sup>2</sup>  
Garages - 70m<sup>2</sup>

### La Masía - Main house

The farmhouse consists of two floors, distributed as follows:

Ground floor is mainly the day area, consisting of a large entrance hall, dining room, kitchen, a service room with full bathroom, two living rooms with fireplace with the typical Catalan construction of "voltes" finished with stone. The living rooms have direct access to the garden. On this same floor there is also a double - triple bedroom and a full bathroom.

The first floor has a large hall with living room and fireplace, which leads to 3 double bedrooms and 3 bathrooms. The master bedroom has a large dressing room and direct access to a 140m<sup>2</sup> terrace facing south, with views of the Massis de Gavarres, els Angles and Puig d'Arques and the villages of Madremanya and Cruilles.

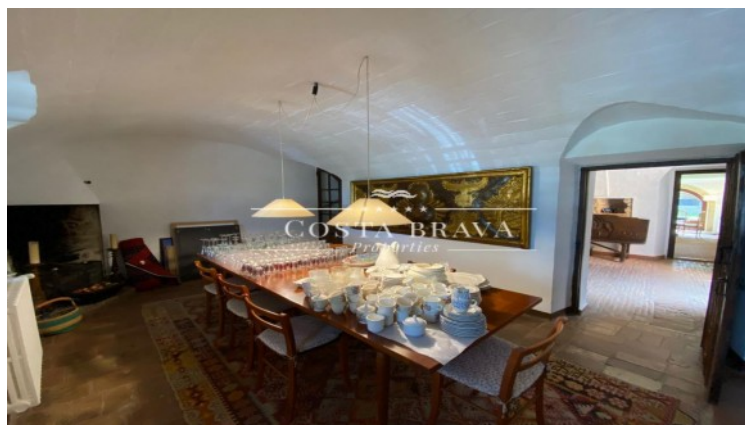
The farmhouse stands out for its authentic vaulted ceilings.

### Guest house - Annexe

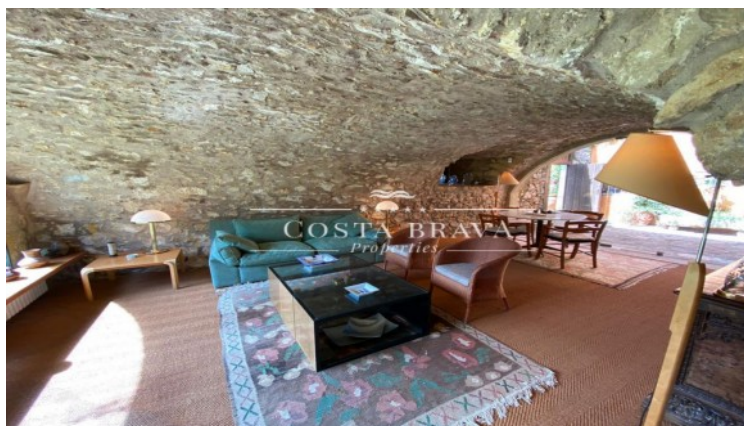
The guest house is a single ground floor, consisting of a living room with fireplace with direct access to the porch, 2 double bedrooms with fitted wardrobes, sharing the same bathroom.

...









Contact us for more information or to arrange a viewing

Tel: +34 636 979 378 / [info@propertiescostabrava.com](mailto:info@propertiescostabrava.com)  
+34 625 380 718

<https://www.propertiescostabrava.com>