

SEAFRONT PENTHOUSE AIGUABLAVA

Begur / Aiguablava

Ref: **RAB521**

PRICE UPON REQUEST

Surface	300 m ²
Rooms	4
Bathrooms	2
E. certificate	In progress
Parking	2 spaces

- ✓ Sea views
- ✓ Furnished
- ✓ Terrace
- ✓ Built in closets
- ✓ Backyard
- ✓ Parking
- ✓ Balcony

In one of the emblematic estates of the Costa Brava, we find this 350sq m seafront penthouse with incredible terraces and direct access to Playa Fonda and the coast path.

The property dates back to 1943 and was renovated in 1970 in a totally Mediterranean style.

It consists of 4 double bedrooms, one of them en-suite with bathroom and 3 bedrooms with single beds sharing a large bathroom with 2 showers, a bathtub and 2 toilets.

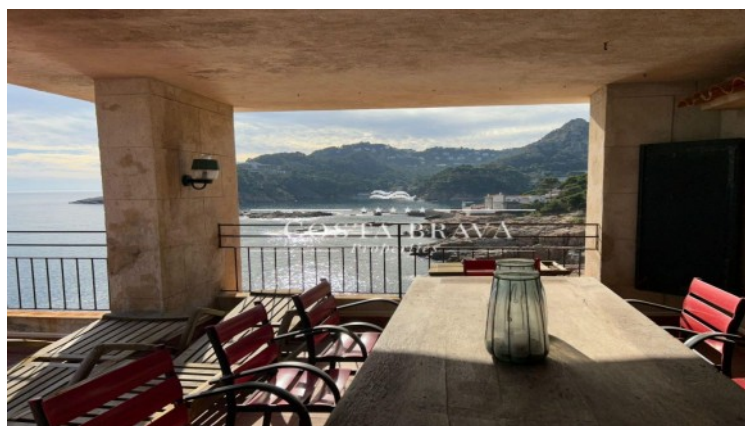
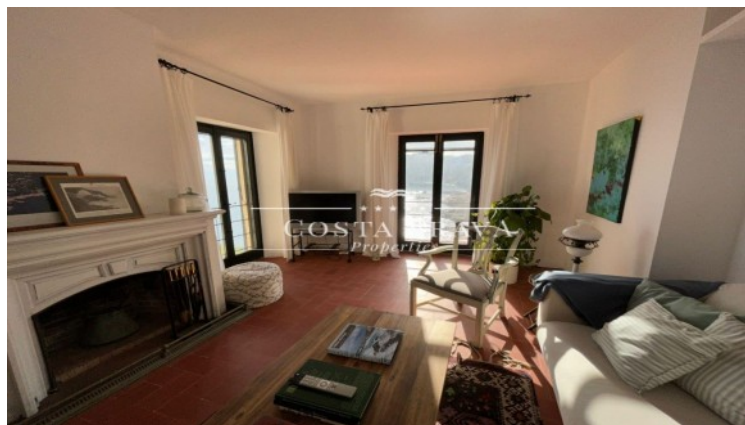
Available for 8 people.

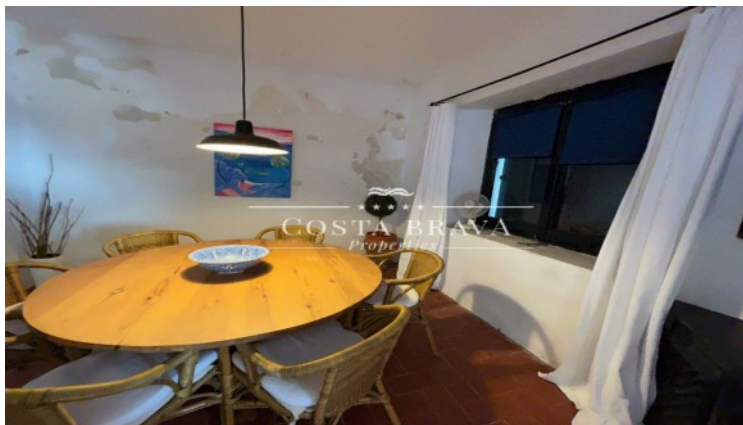
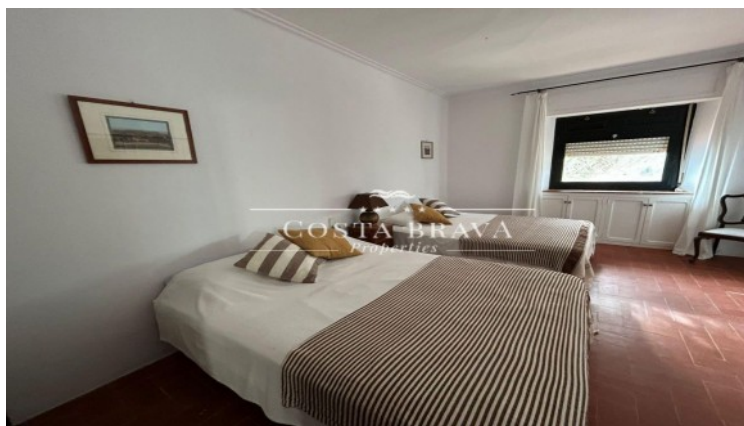
The property has a large parking area.

This is a classic property where the greatest luxury is its location, in Cap Rubí, with breathtaking views.

Ideal house to enjoy Playa Fonda, to practice snorkelling and to be able to enjoy the bottom of the Costa Brava discovering its precious charm.









Contact us for more information or to arrange a viewing

Tel: +34 636 979 378 / info@propertiescostabrava.com
+34 625 380 718

<https://www.propertiescostabrava.com>