



EXCLUSIVE PROPERTY WITH FANTASTIC SEA VIEWS AND PRIVATE POOL IN SA TUNA - BEGUR

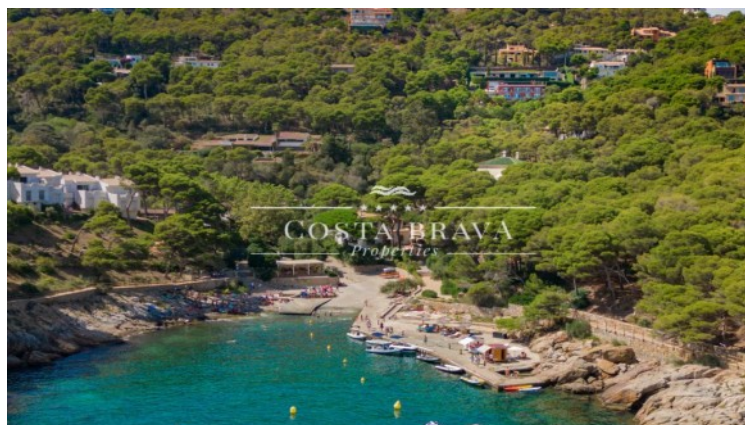
Begur / Sa Tuna

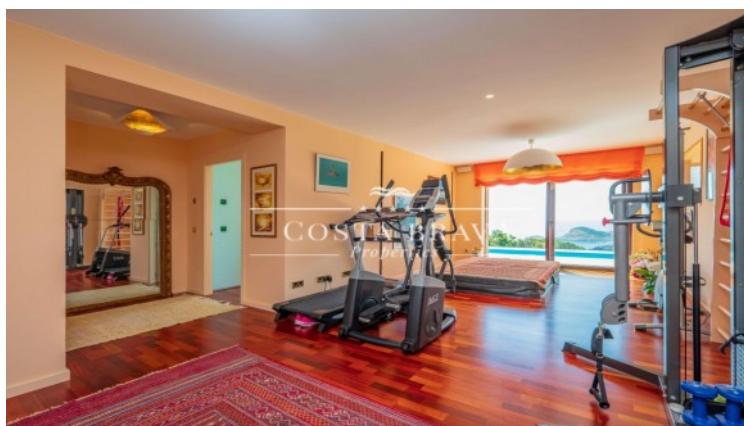
Ref: **ST116**

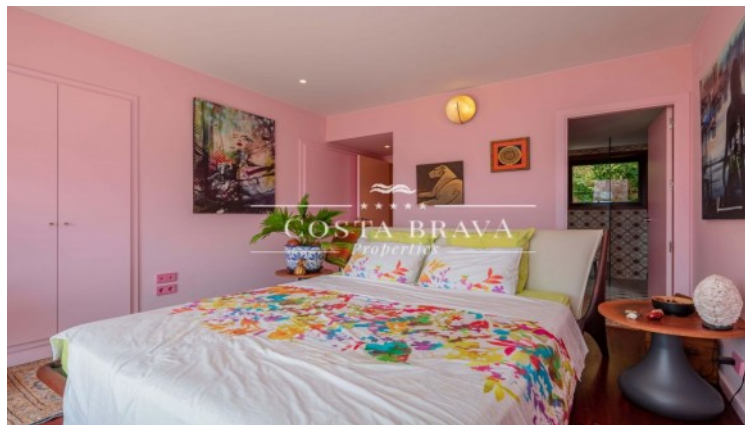
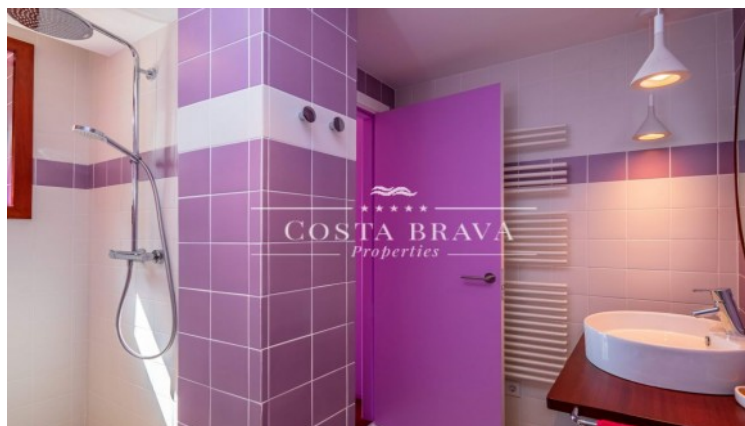
Price	2,950,000 €
Surface	536 m ²
Rooms	5
Bathrooms	5
Plot surface	1,512 m ²
E. certificate	In progress

- ✓ Pool
- ✓ Heating
- ✓ Mountain views
- ✓ Storage
- ✓ Fireplace
- ✓ Outside
- ✓ Air conditioning
- ✓ Sea views
- ✓ Backyard
- ✓ Lift
- ✓ Gym

Exclusive modern villa with stunning sea views built between the beautiful beach of Aiguafreda and the area of Cap Sa Sal on a plot of 1.512 m². It enjoys an ideal location less than 10 minutes' walk from Aiguafreda, surrounded by pine trees and nature. Enjoys sun all day long due to its south-east orientation. Distributed over 3 levels connected by a lift, it is distributed as follows: Through a ramp we access the ground floor where we find a spacious garage for two cars, storage space, work room, laundry room and toilet. On the first floor we find the spectacular outdoor area with salt water infinity pool and large terrace overlooking the picturesque Cala de Sa Tuna, partially enclosed and heatable outdoor chill-out area and a glazed sauna. On the same level the house has a multipurpose room with indoor jacuzzi and gym, a double bedroom used as an office, bathroom with shower, dressing room and a second multipurpose room with fireplace, projector and home cinema that could be a large suite. On the upper floor, a large living-dining room with fireplace, open-plan kitchen, guest toilet and a large en-suite bedroom with shower and bathtub and access to the terrace. On the roof terrace there is a vegetable garden and the solar panels area. The house has top quality finishes and all the comforts for both year-round living and as a holiday home, such as central heating, radiant floor heating, double glazing, air-conditioned chill-out areas, water softener, exterior insulation and a host of other extras. Unique property for sale with beautiful views, total privacy, a short distance from the Aiguafreda cove and located in a quiet area surrounded by pine trees and green areas. Built surface: 536 m². Surface plot: 1512 m². Facing: South-East Year of construction: 2005. Additional purchase fees: 10% tax +Notary fees + land registry fee







Contact us for more information or to arrange a viewing

Tel: +34 636 979 378 / info@propertiescostabrava.com
+34 625 380 718

<https://www.propertiescostabrava.com>