



FANTASTIC GROUND FLOOR APARTMENT FOR SALE, AT 2ND LINE ON THE SEAFRONT IN CALELLA DE PALAFRUGELL

Palafrugell /
Calella de palafrugell

Ref: CP103

Price	495,000 €
Surface	72 m ²
Rooms	1
Bathrooms	2
E. certificate	In progress
Parking	1 spaces

✓ Parking

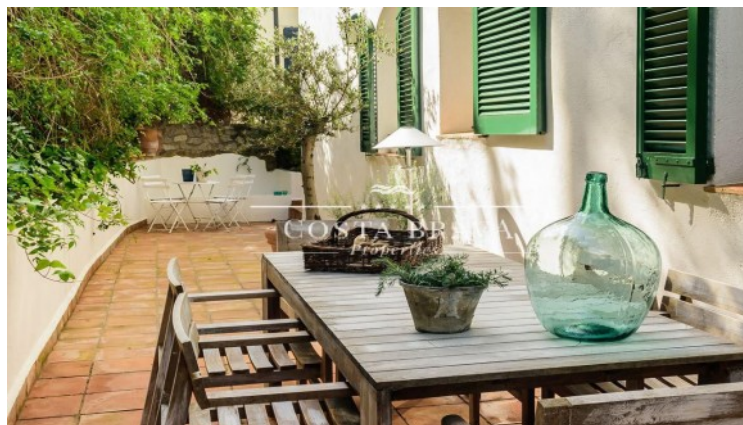
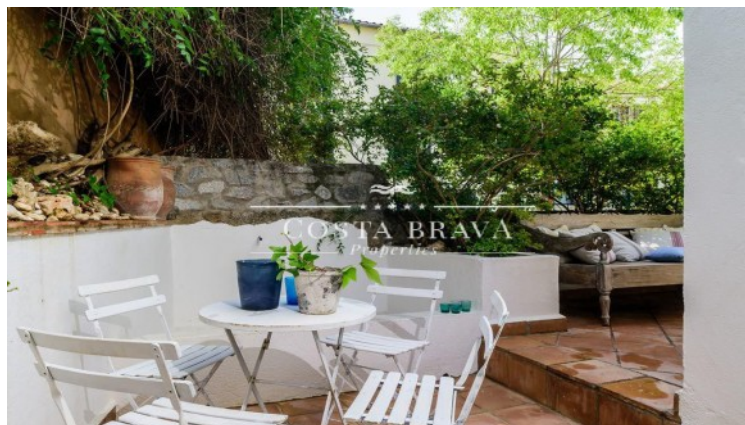
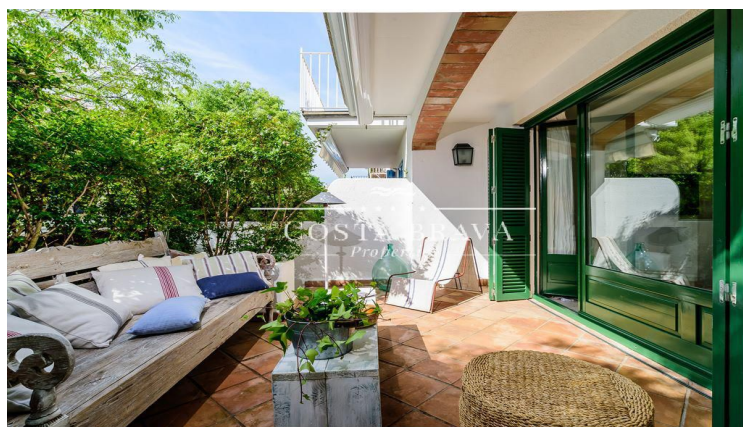
✓ Terrace

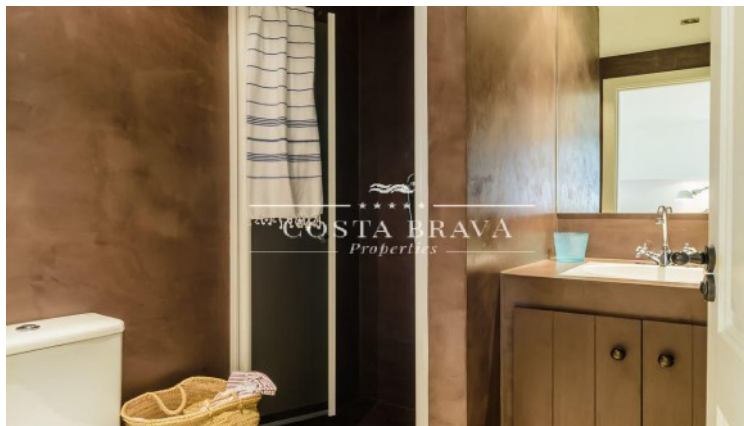
Magnificent corner apartment on ground floor ready to move in, located in the heart of the picturesque town of Calella de Palafrugell. It is situated in an old fisherman's house renovated as an apartment block. It is located on the second line of the seafront where you can smell the sea and enjoy the tranquility of its pleasant patio.

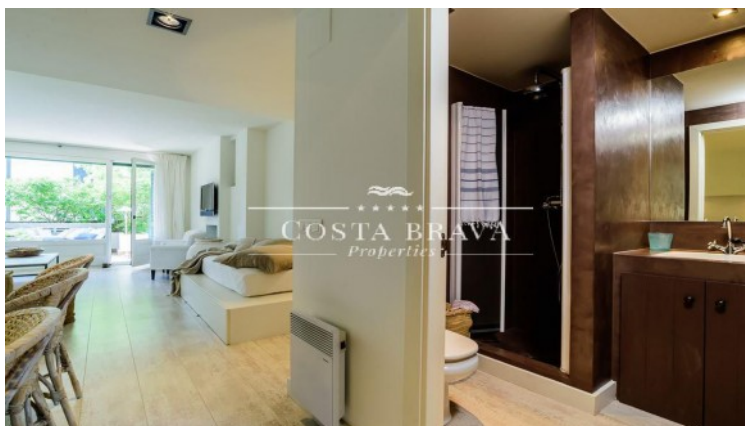
A small hall welcomes us to the property, giving way to the kitchen and dining area, ideal space to make meals with friends and family. The kitchen is equipped with all appliances and follows a simple line and light colours, to give more light to the space. From here we access to the spacious lounge and chill-out area, a space where you can relax in front of the fireplace and thanks to the large window enjoy the pleasant views of the patio. It also has a bathroom for the daily use and for the guests. The front patio of the apartment maintains a Mediterranean style and it's fresh thanks to a refreshing fountain and native plants, this same patio extends to the side of the property where there is an area to eat in summer. At the other extrem of the property there is the spacious bedroom en suite, which is separated from the rest of the apartment with a large solid sliding door, the bathroom of the bedroom is equipped with shower. From the bedroom there is access to the exterior of the property by a large window, this outdoor space occupies the 3 facades of the property, and connecting with the side terrace (summer dining room) and the front patio.

The apartment is located just 10 meters from the Canadell beach and its beautiful promenade, so you enjoy a quiet property without renouncing the proximity to the most visited areas of Calella de Palafrugell. The furniture is restored and reminiscent of the Provençal style of southern France. The apartment retains the spirit of cool Mediterranean cottage. The property has parking space and storage room in the garage of the property.

Built Area: 72 m2 Year of construction: 2.004 Orientation: East Com. Charges: 71,60 €/month PURCHASE EXPENSES: 10% ITP TAX + NOTARY + ADMINISTRATIVE RECORD









Contact us for more information or to arrange a viewing

Tel: +34 636 979 378 / info@propertiescostabrava.com
+34 625 380 718

<https://www.propertiescostabrava.com>