



TOWN HOUSE IN LLOFRIU

Palafrugell

Ref: LLF501

PRICE UPON REQUEST

Surface	240 m ²
Rooms	4
Bathrooms	2
Plot surface	564 m ²
E. certificate	In progress

- ✓ Backyard
- ✓ Fireplace
- ✓ Terrace
- ✓ Storage
- ✓ Parking

Fantastic village house with many possibilities in Llofriu (Costa Brava). In one of the most sought after areas of the Costa Brava, just 10 minutes drive from the most beautiful and emblematic beaches of the area of Calella de Palafrugell, Llafranc, Begur, etc...

The house currently has a constructed area of 240 m² with the possibility of extending 70m² more, on a plot of 563 m². In the ground floor we find the hall, kitchen-dining room with fireplace, space for living room and dining room with exit to a fantastic garden with laundry area, a complete bathroom and storage room. We can also access the garden through a gate for car access. The property has two entrances

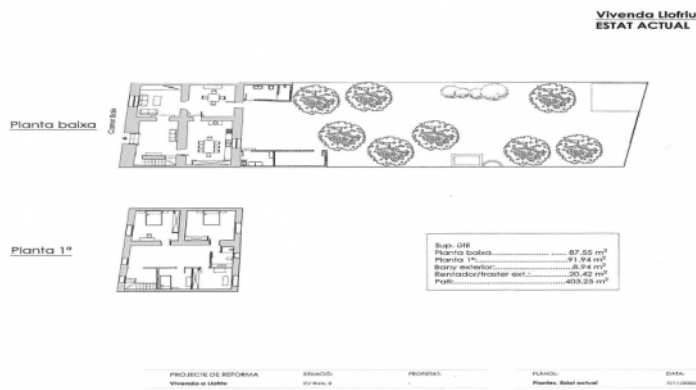
All the rooms on the ground floor have the original stone vaulted ceiling, which gives this house a special charm.

On the first floor there are currently 4 spacious double bedrooms with fitted wardrobes and a complete bathroom.

Orientation: south

The house is in good condition to live in, but with a small investment it has many possibilities.





Contact us for more information or to arrange a viewing

Tel: +34 636 979 378 / info@propertiescostabrava.com

 +34 625 380 718

<https://www.propertiescostabrava.com>